

**MUTOH**

**OPERATION  
MANUAL**

**ValueJet Print Server**

Read This Manual Before Using The Application

# Contents

1	Introduction .....	1-1
2	Notes for Use .....	2-1
2-1	Preparation .....	2-1
2-2	Software RIP Setup .....	2-1
2-3	Notes .....	2-2
3	How to Use .....	3-1
3-1	Operation of ValueJet Print Server User Interface Setup .....	3-1
4	Setup Window .....	4-1
4-1	Start-up Procedure .....	4-1
4-2	Setup Switch Operation .....	4-1
4-3	Service Settings Tab .....	4-3
4-4	Connection Settings Tab .....	4-4
5	Restrictions .....	5-1
5-1	When RIP and Spectrophotometer (SPECTROVUE) are used in combination .....	5-1
6	Troubleshooting .....	6-1
6-1	Troubles for Installation .....	6-2
6-2	Troubles related to Printing .....	6-4

# 1 Introduction

ValueJet Print Server is an application to improve the ValueJet performance.

This document describes the operation instructions of ValueJet Print Server.

For the installation procedure and recommended environment, refer to the installation manual.

## 2 Notes for Use

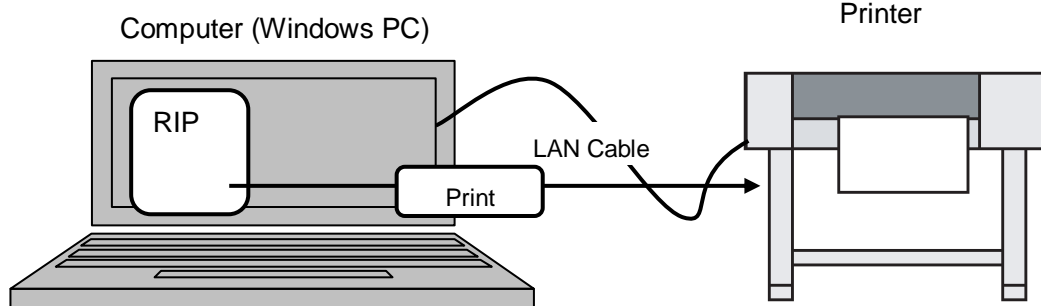
### 2-1 Preparation

The ValueJet Print Server behaves as a printer on the installed PC.

By rewriting the printer IP address for the currently used RIP software to the IP address of PC with ValueJet Print Server installed, print data will be relayed between ValueJet and RIP software.

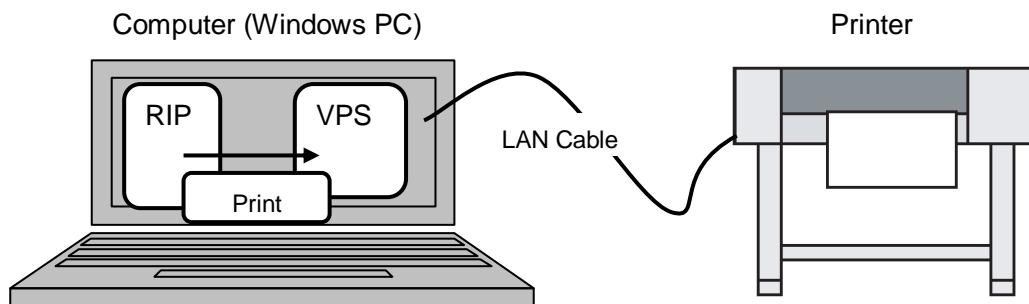
**Fig 1 Before the introduction of ValueJet Print Server**

Send a print data from RIP to printer directly and perform printing.



**Fig 2 After the introduction of ValueJet Print Server**

Send a print data from RIP to ValueJet Print Server (VPS). The print data will be optimized by ValueJet Print Server and sent to the printer.



### 2-2 Software RIP Setup

Change the printer IP address for the currently used RIP software to the IP address of PC with ValueJet Print Server installed.

For the setup procedure, refer to the manual that comes with the RIP software.

## 2-3 Notes

- In order to operate and install the ValueJet Print Server, the administrator rights of computer will be required.
- Check that the printing is performed with Gigabit Ethernet connection by Windows task manager while printing. (Without VJ-1638/VJ-1638W)
- Refer to the notes in installation manual “Operating Environment”.

## 3 How to Use

### 3-1 Operation of ValueJet Print Server User Interface Setup

The administrator rights of computer will be required for the operation.

When the IP address is set correctly at the installation, the operation for User Interface is not necessary.

#### NOTE

---

- When the service start setting in [“4-4 Connection Settings Tab”](#) is not set to “Auto Start”, the start-up operation will be required every time the computer is turned on.

For the start-up operation, refer to [“4-3 Service Settings Tab”](#).

---

## 4 Setup Window

### 4-1 Start-up Procedure

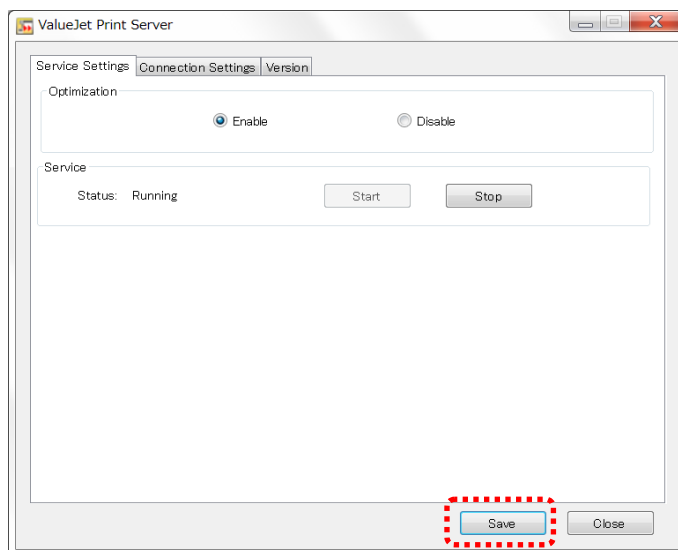
To change the ValueJet Print Server setting, follow the procedure below to start the setup window.

- Click [Start] - [All Programs] - [Mutoh] - [ValueJet Print Server] - [ValueJet Print Server Config]

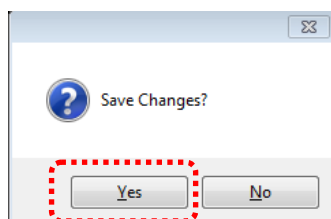
### 4-2 Setup Switch Operation

This operation is common to all windows.

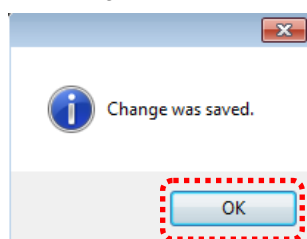
Click [Save] button to change the setting.



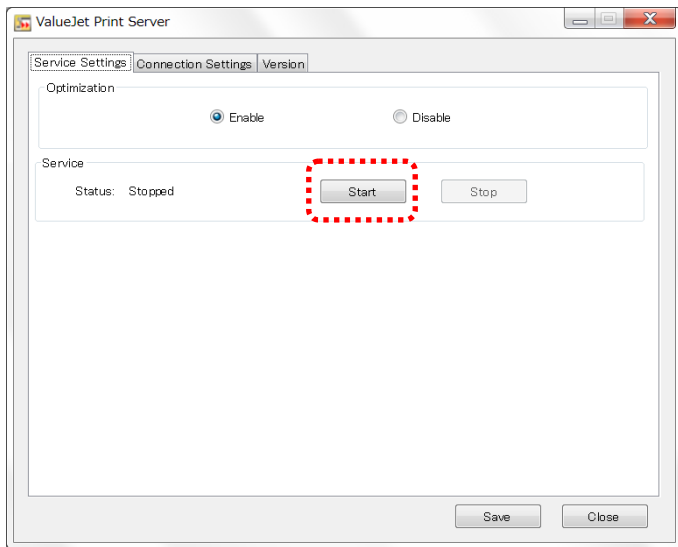
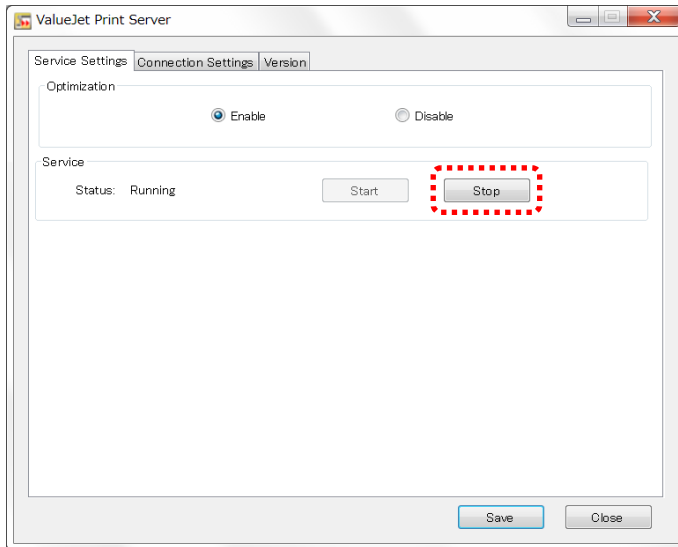
Select [Yes] in the dialogue below to save the setting.



When the setting is saved, the window below will be displayed. Press [OK] to close the window.



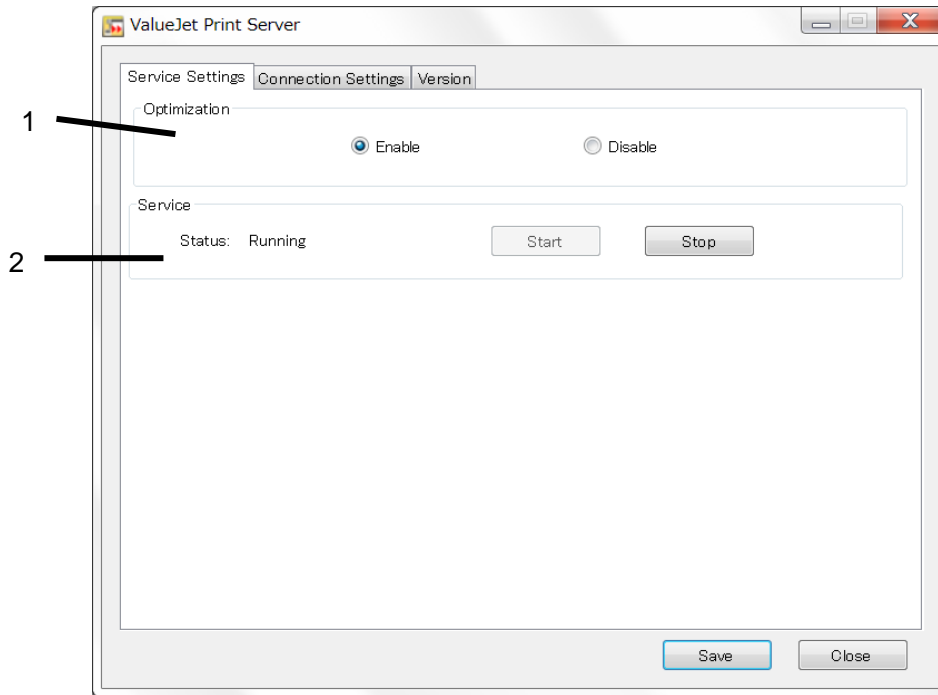
After the setting, select [Stop] → [Start] for [Service] in [Service Settings] tab, or restart the PC to reflect the setting.





### 4-3 Service Settings Tab

Use this tab to start / stop the ValueJet Print Server, and change the setting for optimization function.



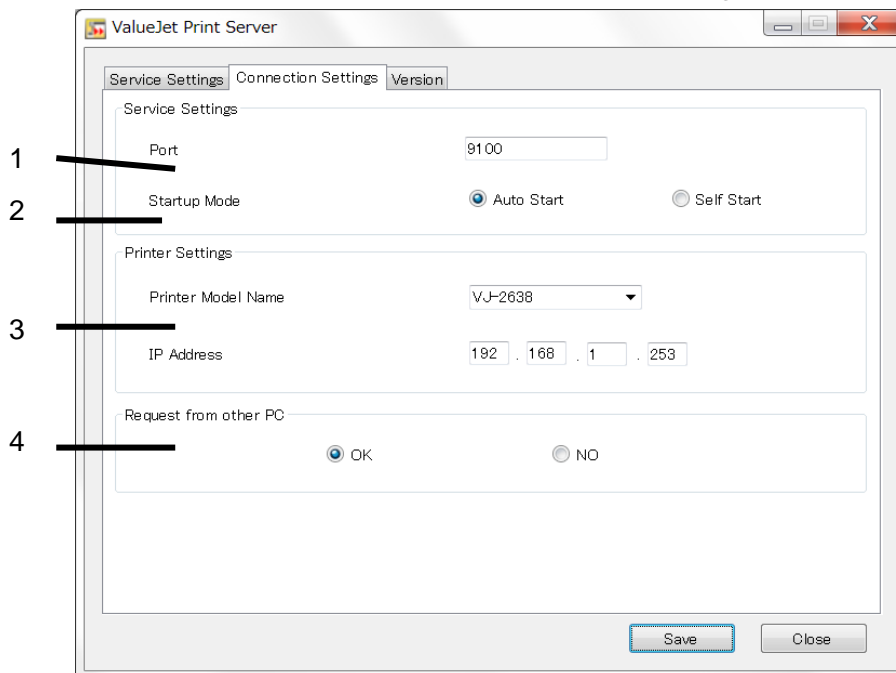
No.	Name	Contents
1	Optimization	When “Enable” is selected, perform the processing of ValueJet Print Server. If a data that cannot be printed with ValueJet Print Server exists, it will be switched to “Disable”.
2	Service	Use this setting to stop / start the ValueJet Print Server manually.  When the “Status” is “Running”, the service is in operation. When the “Status” is “Stopped”, the service is stopped.

#### NOTE

- If printing does not start even by operating RIP and printer, start the user interface, and click “Stop” then “Start” in “Service Settings” tab to restart the ValueJet Print Server service.
- When the service is set to “Stop”, change the setting to “Start”.

## 4-4 Connection Settings Tab

Use this tab when the IP address of printer is changed.



No.	Name	Contents
1	Service Settings Port	When the program to use PC port number “9100” is already started, the port number to use can be changed. The RIP setting will be also required to change. Refer to the manual attached with RIP.
2	Service Settings Startup Mode	Setting method to start up ValueJet Print Server. Auto Start: Start automatically at the start-up of computer. Self Start: Start manually.
3	Printer Settings	Printer Model Name – Select the printer model. IP Address – Used to change the printer IP address.
4	Request from other PC	Setting method to permit the printing of RIP operating in other PC. When this setting is specified to “No”, printing from other PC will not be available.

## 5 Restrictions

This chapter describes the restrictions to use this application, and the differences from the direct printing to ValueJet.

### 5-1 When RIP and Spectrophotometer (SPECTROVUE) are used in combination

To use the spectrophotometer, the direct communication between RIP and ValueJet will be required.

Change the IP address setting of ValueJet Print Server specified for RIP to the IP address of ValueJet, and perform the color measurement. After this operation, return the IP address setting to ValueJet Print Server.

For the setting method, refer to the manual attached to RIP.

To operate the spectrophotometer from our ValueJet Status Monitor (VSM), the setting change is not required.

## 6 Troubleshooting

This chapter describes the possible troubles may occur while using this product, and the coping processes.

The processes in this chapter is based on that the printer warming-up is completed.

## 6-1 Troubles for Installation

(1) Cannot print even after the setting is completed

1: Make sure that the target ValueJet printer is the printer listed below.

VJ-2638, VJ-1638, VJ-1638W    Firmware Version 2.06 or later

2: The panel display and the instructions are shown below.

Status 1: Panel display “Ready to Print” or “Print Ready”

Please check the IP address setting.

- “ValueJet Print Server” - “Connection settings” Tab

Please set the IP address of the printer.

 [4-4 Connection Settings Tab](#)

- “Software RIP”

Please set the IP address of the PC with “ValueJet Print Server” installed .

(When the setting is performed according to the manual, the IP address is the same as the IP address of PC with RIP software installed)

Refer to the manual attached to Software RIP.

Status 2: Panel display is “Ready to Print” or “Print Ready”

When the setting of Status 1 is correct, check if the “ValueJet Print Server” operates properly.

 [4-3Service Settings Tab](#)

Status 3: Panel display is “Receiving”

The setting of Windows Fire wall is required.

“Control Panel” --- “Allow a program through Windows Firewall”

### NOTE

- This may be due to the restriction for network, and the influence of resident software for switching. Please check the operating manual of the installed software.
- This may be due to the protocol setting of software RIP.

- For the details, refer to the “Software RIP Setting” in “ValueJet Print Server Installation Manual”.

(2) Is there any method to distinguish whether “Direct Print” or “ValueJet Print Server” is used?

1: Please check the status when a printing started.

When the panel display is “Receiving” and the printer starts initialization after a while, “ValueJet Print Server” is used for the printing.

When the panel display is “Printing” and the printer starts initialization at the same time, “Direct Print” is used for the printing.

2: The “netstat” command can be executed also from the command prompt of the computer with “ValueJet Print Server” installed.

Example)

Machine	Name	IP Address	Note
PC	PC123	192.168.1.100	Include “ValueJet Print Server” and “Software RIP”
ValueJet	-	192.168.1.253	VJ-2638

(The numerical value is different every time.)

“ValueJet Print Server”

```
C:\>netstat

Active Connections

Proto Local Address           Foreign Address         State
TCP   PC123:1077             192.168.1.100:9100     ESTABLISHED
TCP   PC123:9100             192.168.1.100:1077    ESTABLISHED
TCP   PC123:1078             192.168.1.253:9200     ESTABLISHED
```

“Direct Print”

```
C:\>netstat

Active Connections

Proto Local Address           Foreign Address         State
TCP   PC123:1076             192.168.1.253          ESTABLISHED
```

## 6-2 Troubles related to Printing

(1) The print result differs from when the ValueJet Print Server is not used.

1: Please check that no item in the restrictions is applied.

 [5 Restrictions](#)

(2) The printing becomes unavailable suddenly.

1: Restart the “ValueJet Print Server” application.

 [4-3 Service Settings Tab](#)

2: When the panel display does not return to “Ready to Print” or “Print Ready”, cancel the printing or restart the ValueJet.

Also, refer to “Troubleshooting” in the operating manual attached to ValueJet.

3: If the problem is not solved by 1 and 2, restart the RIP and computer.

**MUTOH**